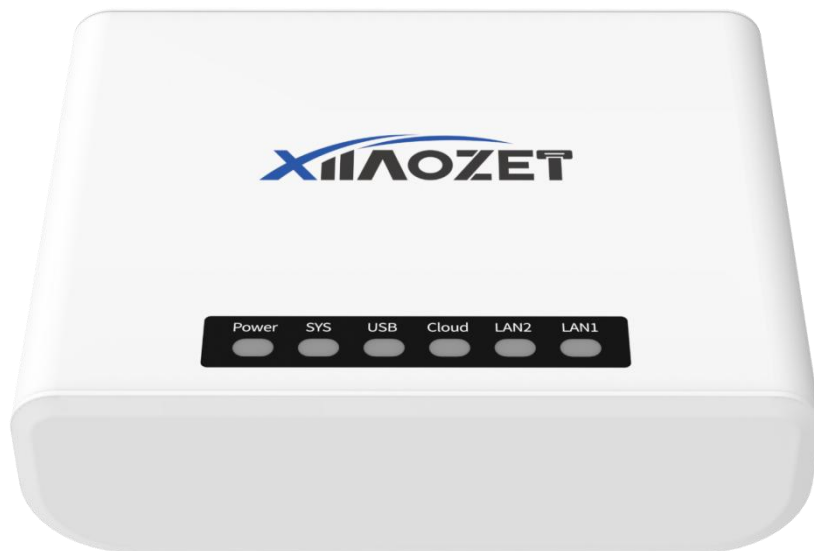




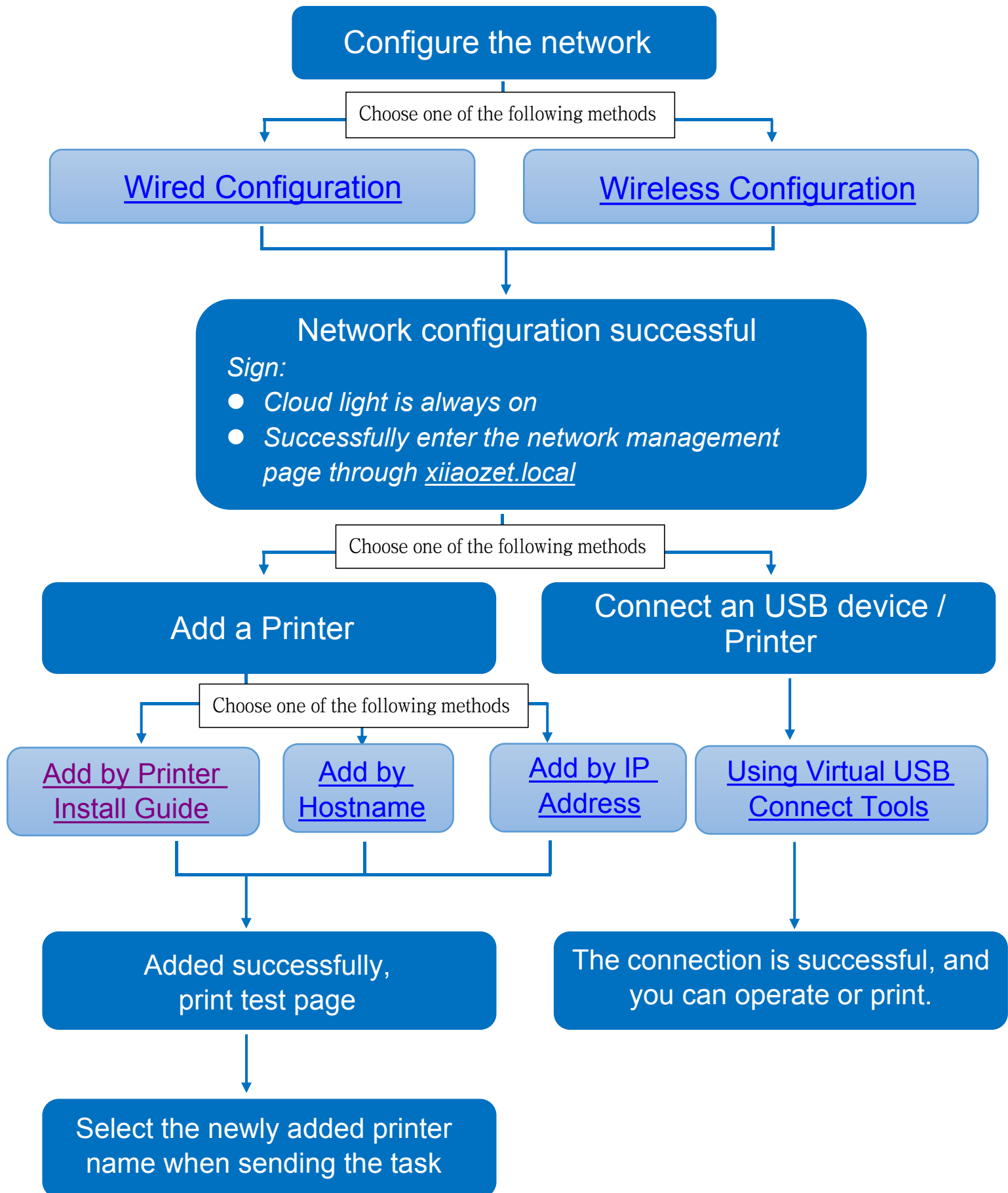
# Networking Print Server

## Quick User Guide



LK100EW/ LK300EW For Windows OS

# Usage Guide



# Step1 : How to Configure Print Server to Connect to the Local Network

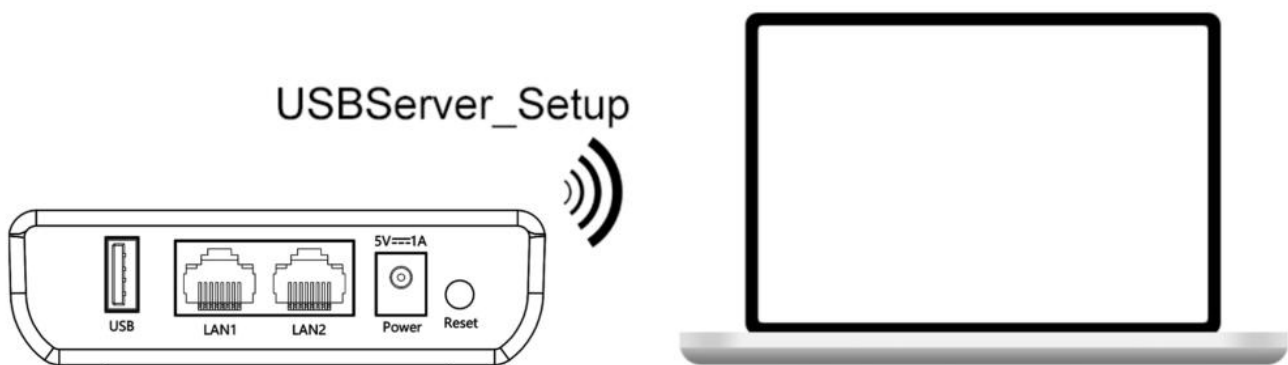
The print server can be connected to the network either through a wired or wireless connection. Note: Please select only one method you prefer for connection.

## Table of Contents


- [Method One: Wireless Network Connection \(via Automatic Popup Page\)](#)
- [Method Two: Wireless Network Connection \(via Management Interface\)](#)
- [Method Three: Wired Connection](#)

## Method One: Wireless Network Connection (via Automatic Popup Page)

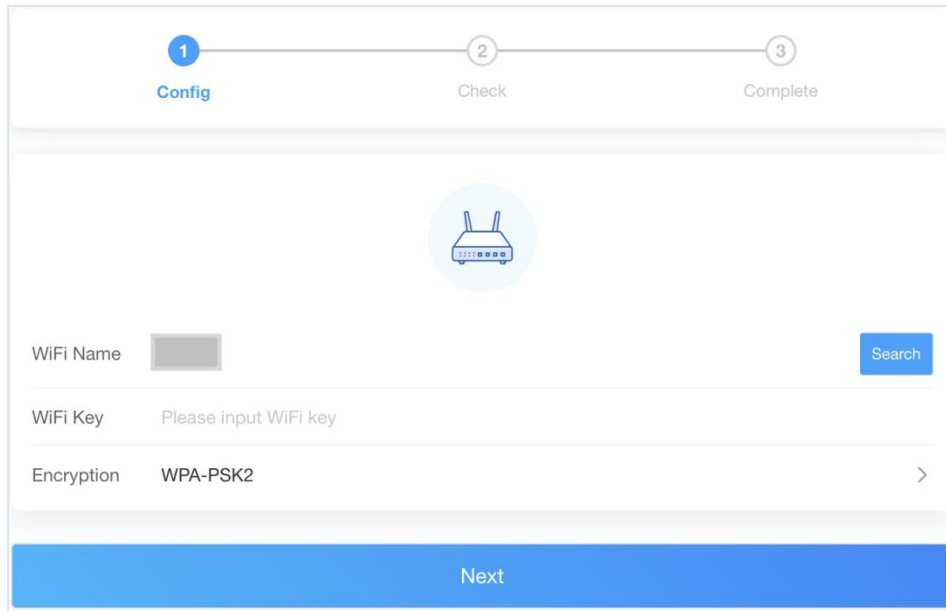
( Note: Here are the network configuration steps for when the print server is in its initial state.)



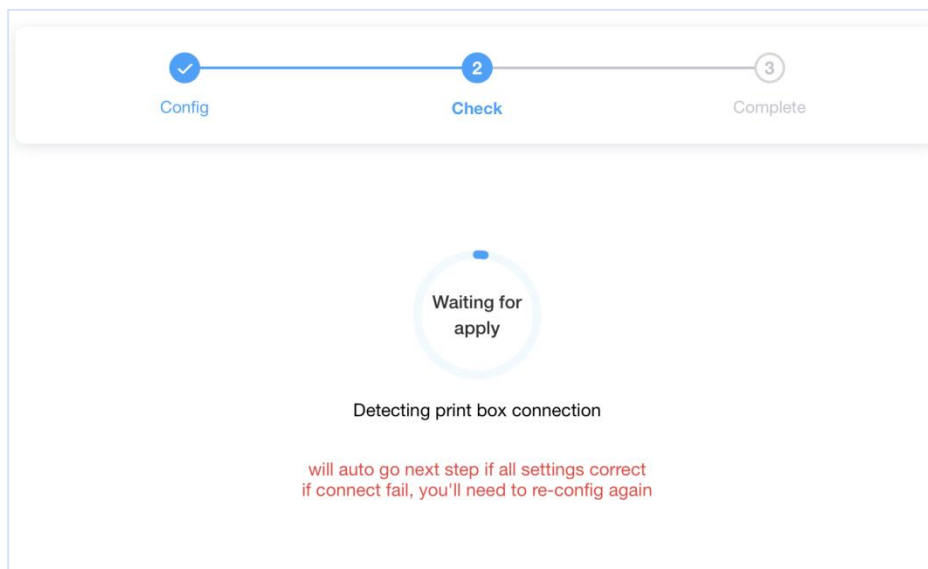
1. Locate and connect to the Wi-Fi network named “USBServer\_Setup” from your computer’s available networks list.
2. Once you connect to USBServer\_Setup, a network setup page will automatically pop up on your computer.

Note: If the network setup page did not automatically pop up, [please setup network via Management Interface turn to Method Two](#) .

- Simply select your 2.4G Wi-Fi and enter your Wi-Fi password. The printer server will then automatically configure the Wi-Fi parameters.

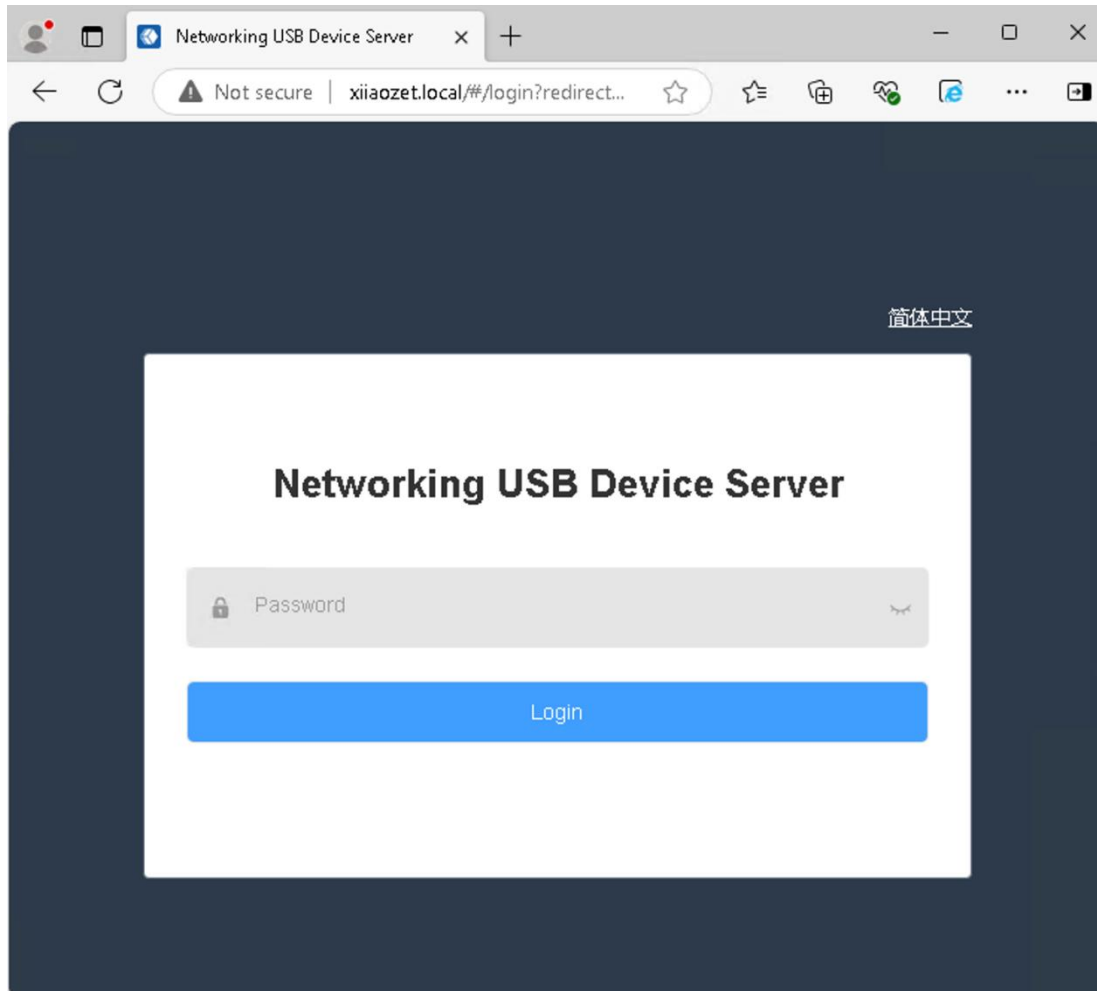


- Wait for about 1 minute, and when the cloud indicator light stays steadily lit, it indicates successful network setup.



- Connect your computer to the same network as the print server.

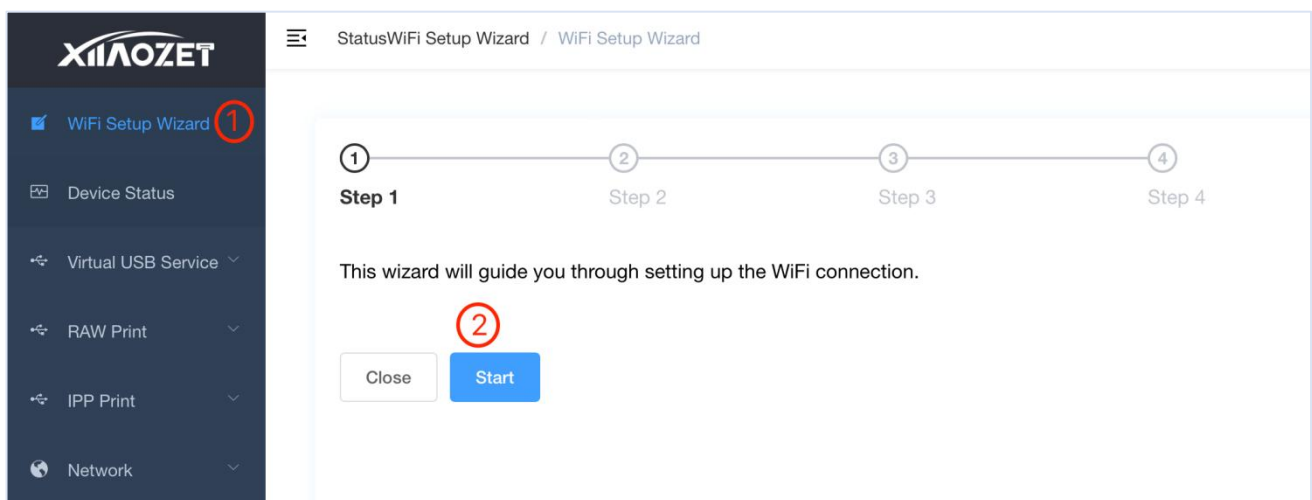
6. Open a browser and enter 'xiiaozet.local' to access the web management page. Default password: admin. If the page loads successfully, it means the print server is connected to the network and can communicate with your computer.



- [Back to the installation flowchart to proceed to the next step](#) 

## Method Two: Wireless Network Connection (via Management Interface)

1. Locate and connect to the Wi-Fi network named “USBServer\_Setup” from your computer’s available networks list. ( If you can not find “USBServer\_Setup”, please press the reset button for 5s to restore initial settings.)
2. Once connected to “USBServer\_Setup” access the print server’s management interface by entering the IP address 192.168.188.188 into your web browser.
3. Enter the key “admin” in the provided key box and click “Login”
4. Navigate to the Wi-Fi Setup Wizard in the toolbar and click the “Start” button.



5. Upon starting, select your desired 2.4G Wi-Fi network from the search results.  
(Note: Ensure this Wi-Fi network is on the same local network as the computer where printing tasks will occur.)

Status / WiFi Setup Wizard / WiFi Setup Wizard

Step 1 Step 2 Step 3 Step 4

1. Please select your WiFi signal in the below list
2. Press "Search again" if the wanted signal not appears
3. If the SSID is hidden, you can input the SSID on the next page

SSID	Quality	Cipher	BSSID
[Hidden]	70	psk2	[Hidden]
[Hidden]	70	none	[Hidden]
[Hidden]	70	psk2	[Hidden]

Close Search again **Submit**

6. Enter the password for the selected Wi-Fi in the Wi-Fi key box and click the "Submit" button.

Status / WiFi Setup Wizard / WiFi Setup Wizard

Step 1 Step 2 Step 3 Step 4

1. Please input your wireless password
2. Incorrect password will cause the setup failure, please make sure enter the correct password
3. Keep other parameter as default in general situations
4. If you're using a mobile phone, please reconnect the WiFi to "USBServer\_Setup" when a red error popup box appears

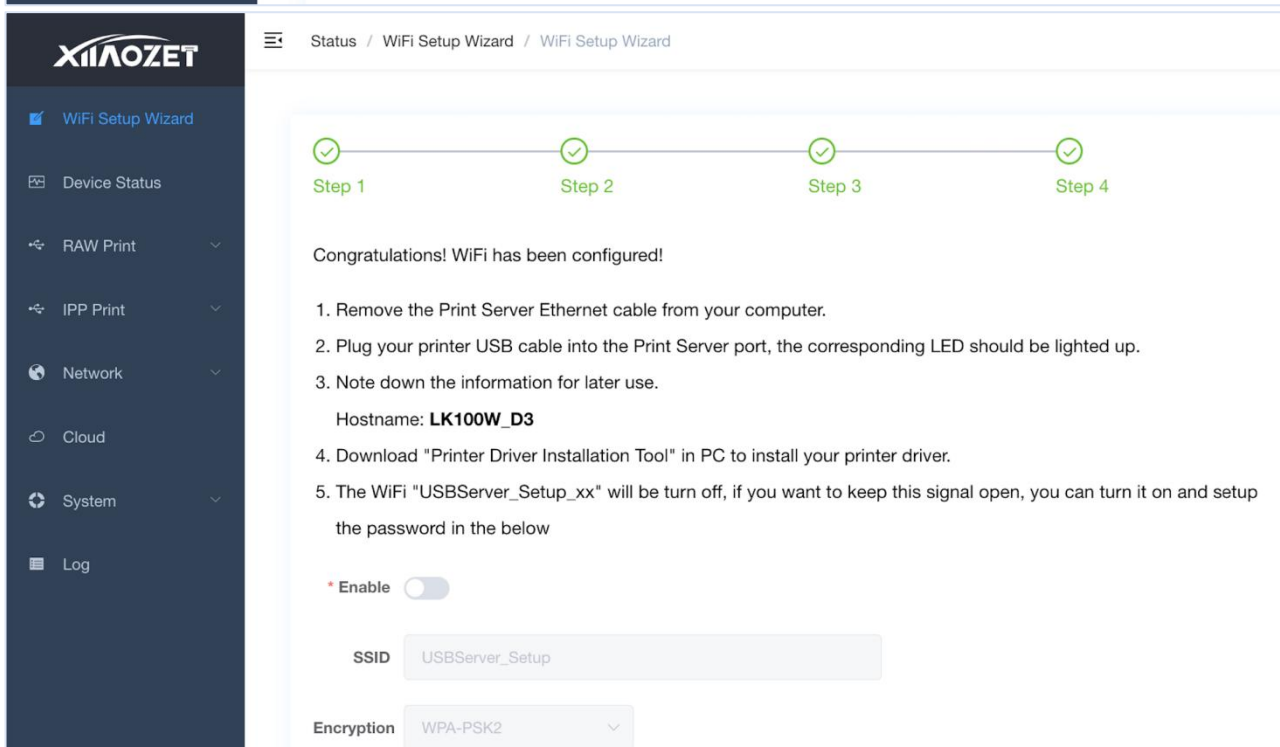
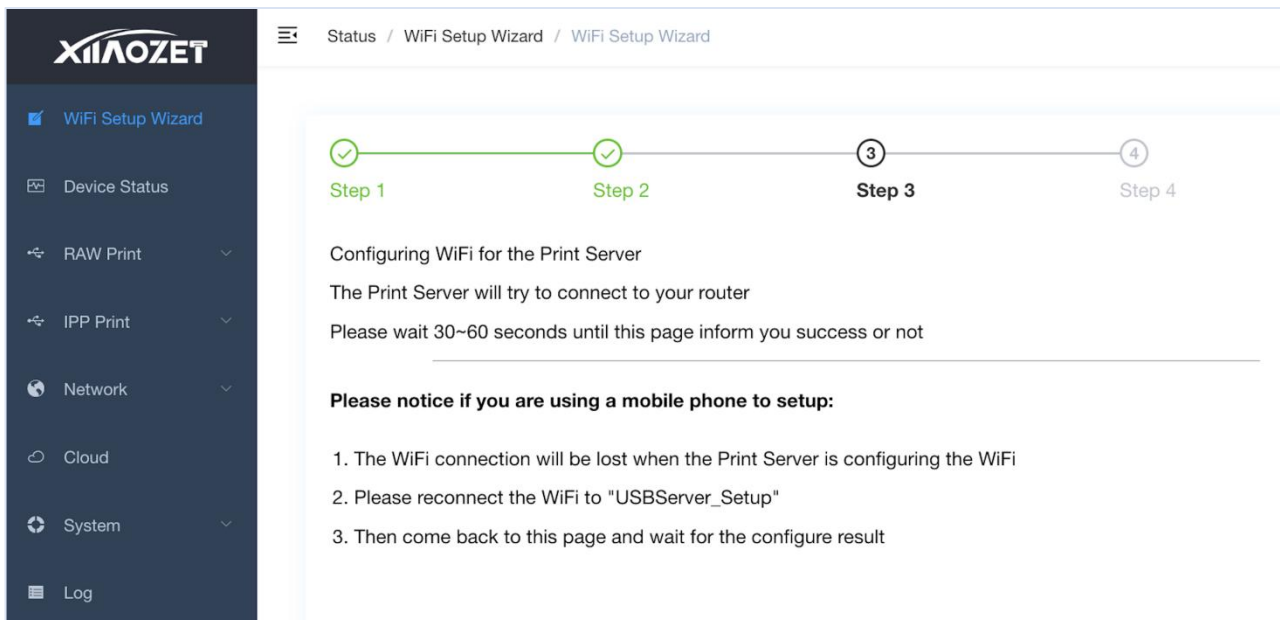
\* SSID [Hidden]

\* Encryption WPA-PSK2

\* Wi-Fi Key [Redacted]

Close Search again **Submit**

7. After submission, the print server will proceed to save, reboot, and configure the Wi-Fi parameters. Allow 30-60 seconds for this process.



8. Observe the Cloud indicator light, which stays on to indicate successful configuration.

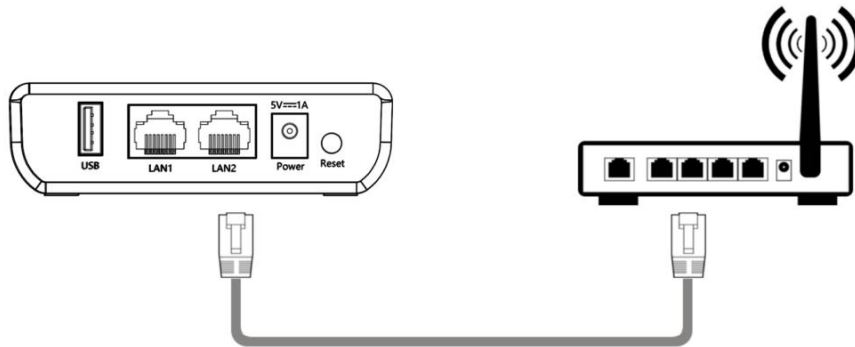
9. Connect your computer to the same network as the print server.

- [Back to the installation flowchart to proceed to the next step](#)



## Method Three: Wired Connection

Note: When using a wired connection, ensure that the router or switch connected to the print server can access the internet properly and is within the same local area network as the computer.



1. After powering on the print server and connecting the USB device, use an Ethernet cable to connect the LAN1/LAN2 port of print server to the router or switch.
2. The print server will obtain an IP address assigned by the router's DHCP.
3. The LAN1/LAN2 indicator remains illuminated, indicating that the wired network setup is complete.
4. Connect your computer to the same network as the print server.

Note: If your local network doesn't use DHCP for IP assignment, or if you prefer to assign a specific IP address exclusively for the print server, you'll need to manually configure the IP address for the print server.

Note: If you want to set a static IP, access the web management page via "xiiaozet.local". The default password is "admin". Set up the network settings under the "Network" tab, change the Protocol to "static".

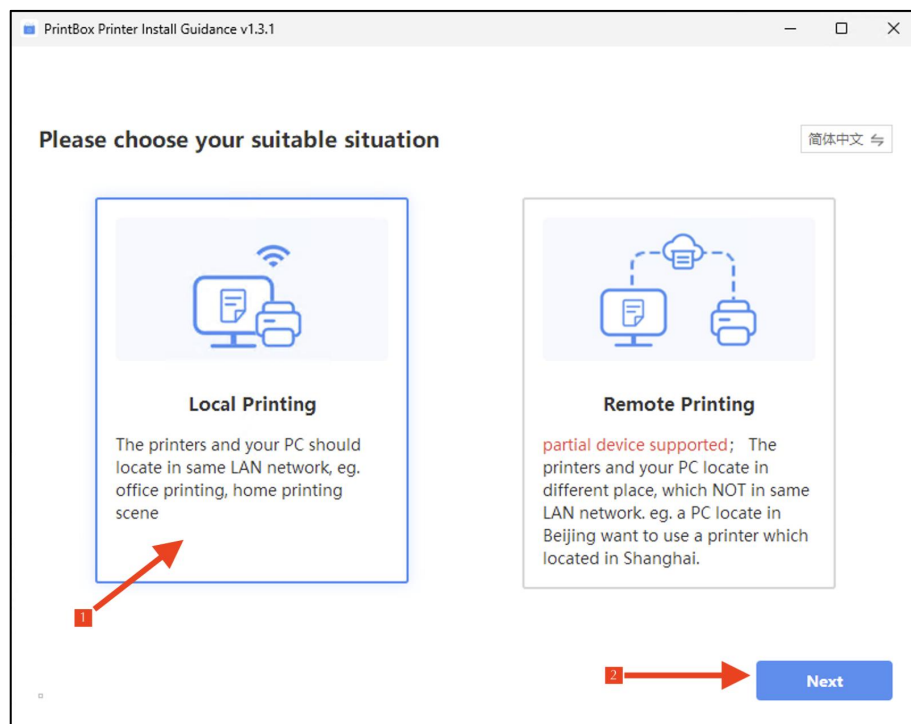
- [Back to the installation flowchart to proceed to the next step](#) 

## Step2: How to Add Printer to Computer with Quick Install Guide (Windows)

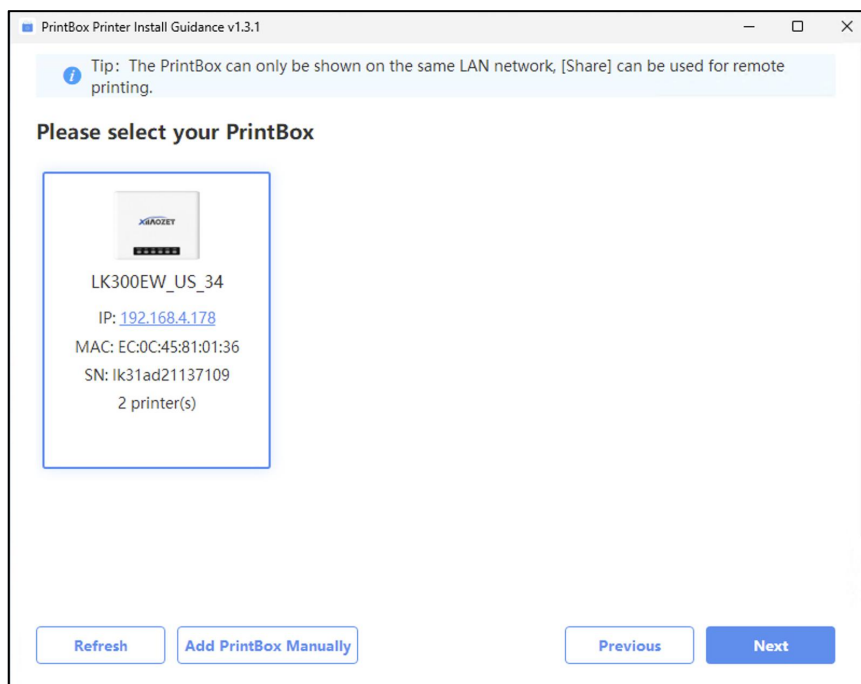
1. Visit [www.xiaozet.net/download](http://www.xiaozet.net/download) to download the Printer-Install-Guide. Install the software following the prompts

Note: if the Printer-Install-Guide cannot be downloaded or used, please add the printer manually.

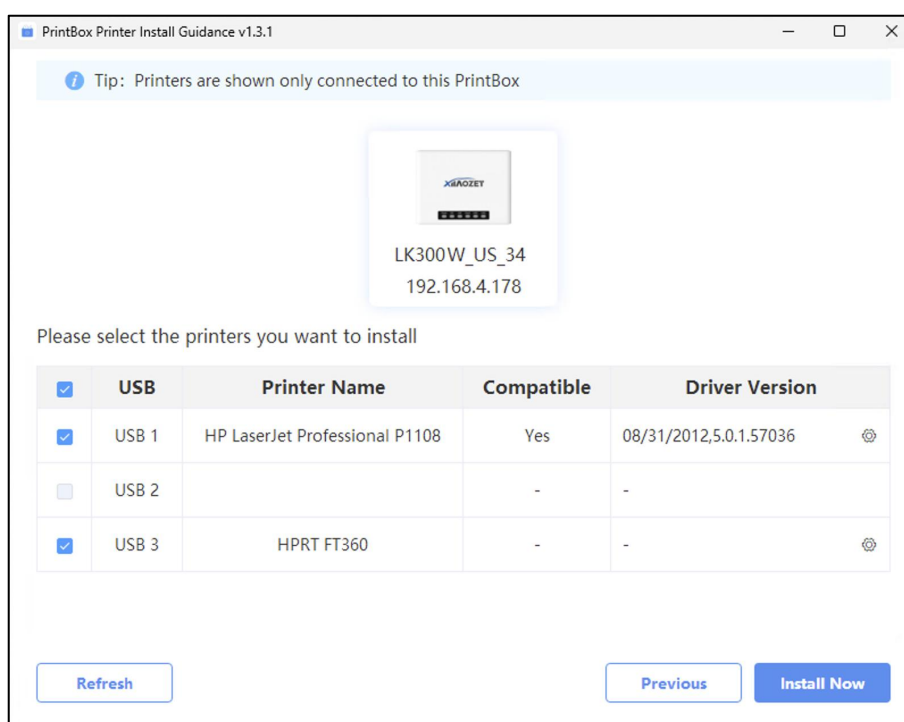
2. Open the installation tool and choose “Local Print,” then proceed by clicking “Next.”



3. The installation tool will search for Xiaozet print servers in the local network. Choose the print server from the search results and click “Next”.

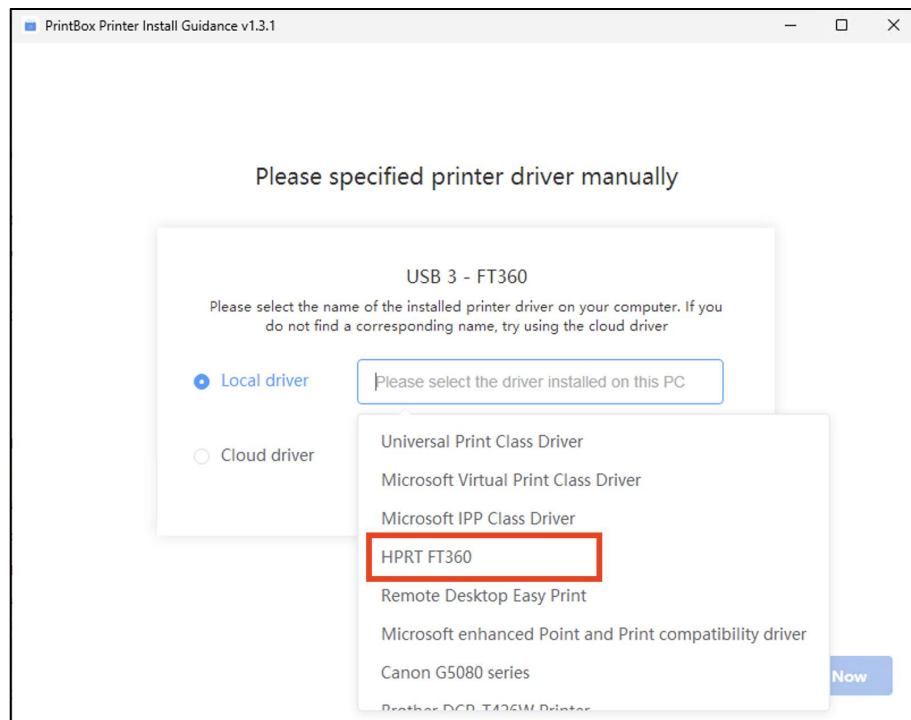


4. The installation tool will automatically identify the printer model of the server, detect and match the corresponding driver, and select the printers for installation. Click “Install Now” for immediate installation.

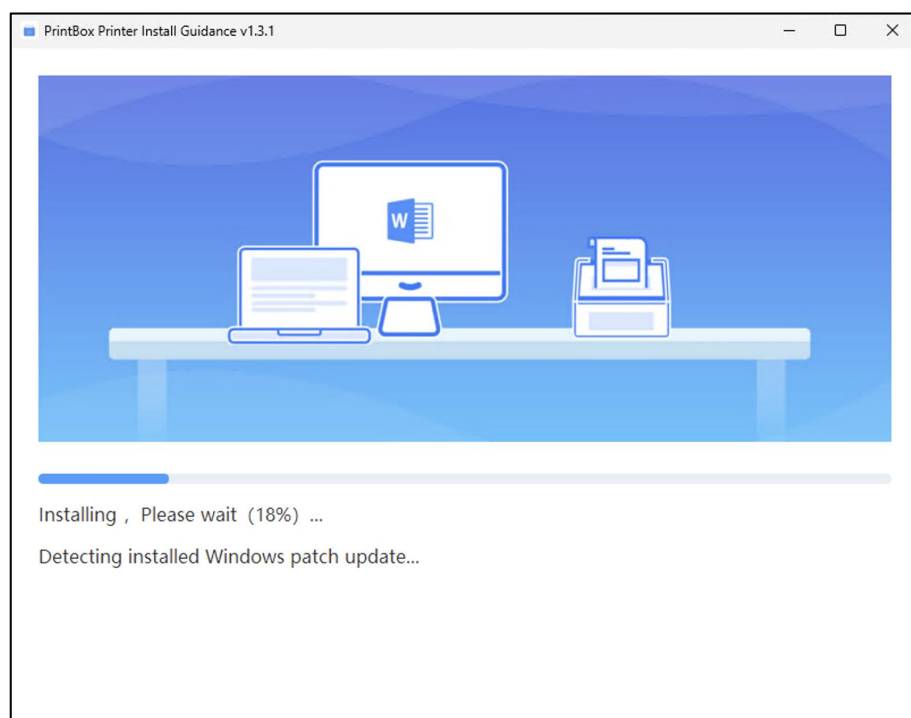


**Note:** If the installation tool fails to match the appropriate printer driver, it does not necessarily mean that the printer is incompatible; it may be because our database has not yet included the driver for this model. **You will need to select a local driver.**

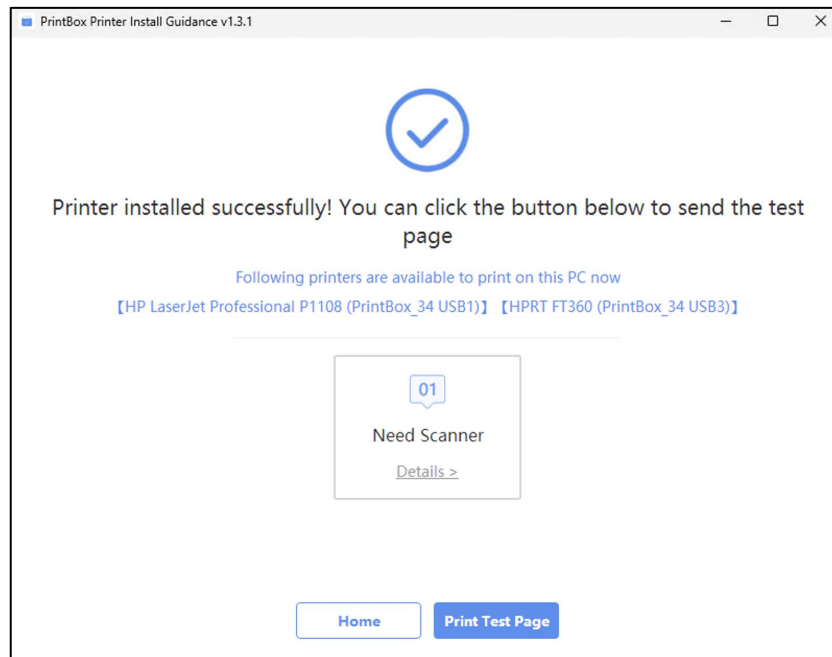
*If there is no driver available locally that matches your printer model, you should visit the official website of the printer brand, download, and install the appropriate driver.*



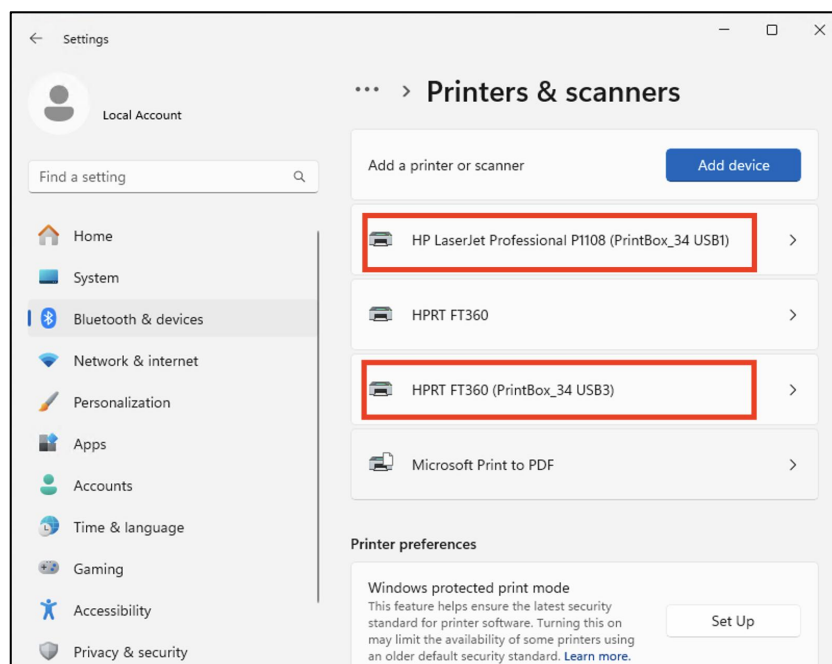
5. The tool will create a TCP/IP port for adding printers, download the necessary printer driver, and proceed with automatic installation.



6. Once the printer addition process is complete, perform a test print. Successful printing of the test page confirms the completion of printer setup.



7. After successfully adding the printer, you can delete the print-install-guide software. The printer will appear in the printer list, with the name followed by 'PrintBox'.



[If unable to successfully add the printer, try other methods.](#) 

# Step2: How to Add Printer to Computer Manually with hostname (Windows)

## Table of Contents

- 1. Install the Printer Driver
- 2. Open the web management page of the Print Server
- 3. Add the printer
- 4. Enter the hostname.local
- 5. Check the port number
- 6. Select the printer driver
- 7. Print a test page





## **1. Install the Printer Driver**

!!! You need to download the driver corresponding to your printer model from the official website of the printer brand first.

## **2. Open the web management page of the Print Server**

After configuring the network for print server, open your browser and enter the following address: xiaozet.local, enter to access the print server's Web Management Page.

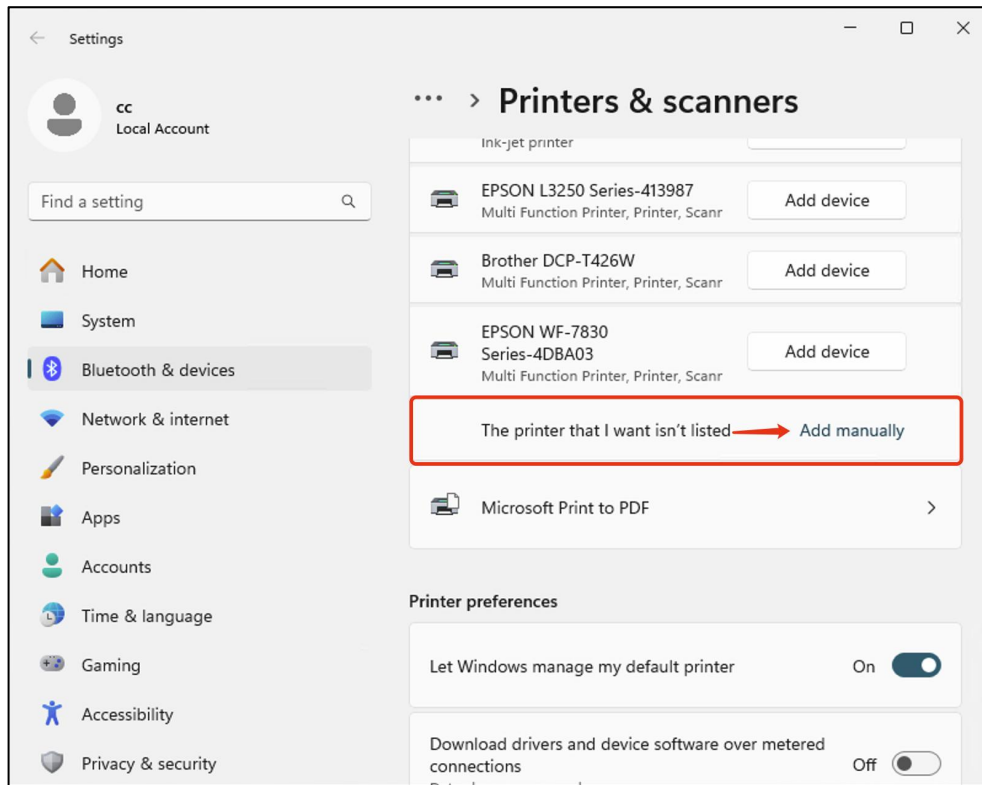
On the Web Management Page, you can find important details such as **the Hostname**, IP Address, and the USB Port where the printer is connected.

System Info		
Status	Info	Action
Hostname	LK300EW_US_34	
Model	LK300EW_US	
Model ID	e461a8430b391e2c	
Firmware Version	2.1.133 (Basic)	
Serial No	■■■ ■■■	
Uptime	5 day 21 hour 24 min 2 sec	
USB Info		
USB Interface	Info	Status
USB1	Manufacturer: None USB Model: None	
USB2	Manufacturer: Brother (04f9) USB Model: HL-2240D series (0040)	

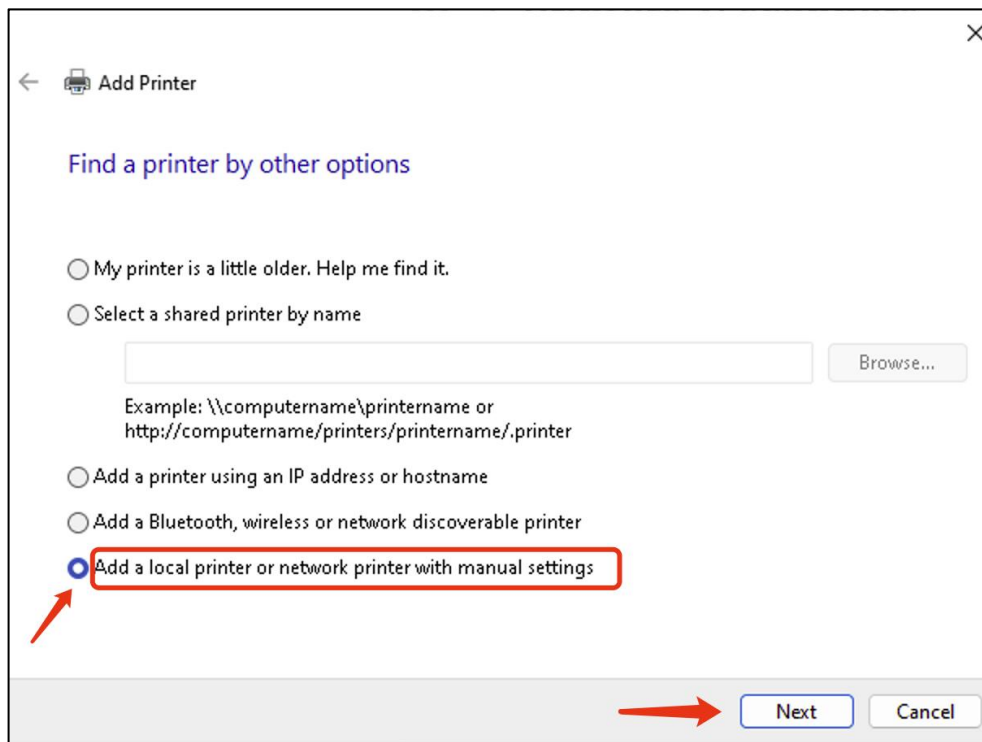
### 3. Add the printer

8. For Windows 10 and earlier systems, open the control panel, navigate to “Devices and Printers,” click “Add a printer,” and then click “The printer I want isn’t listed.”

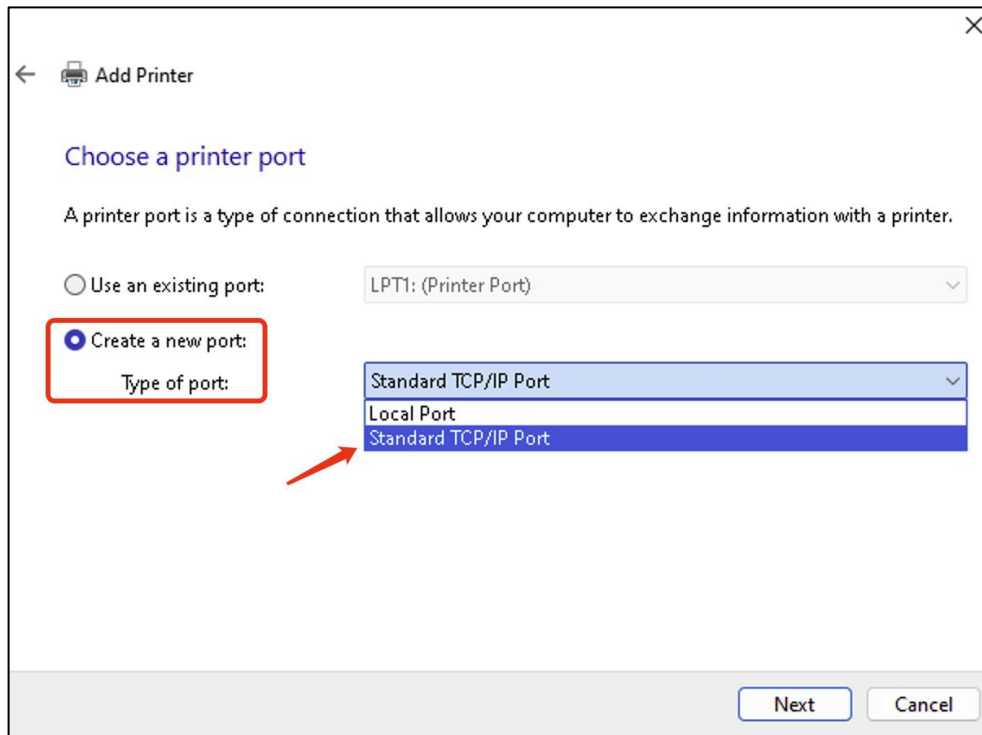
Note: For Windows 11, go to the system “Settings,” click “Bluetooth & Devices,” then select “Printers & scanners,” click “Add device,” choose “The printer I want isn’t listed,” and then click “Add a printer manually”



9. Choose to manually add a local printer or network printer, and click “Next.”

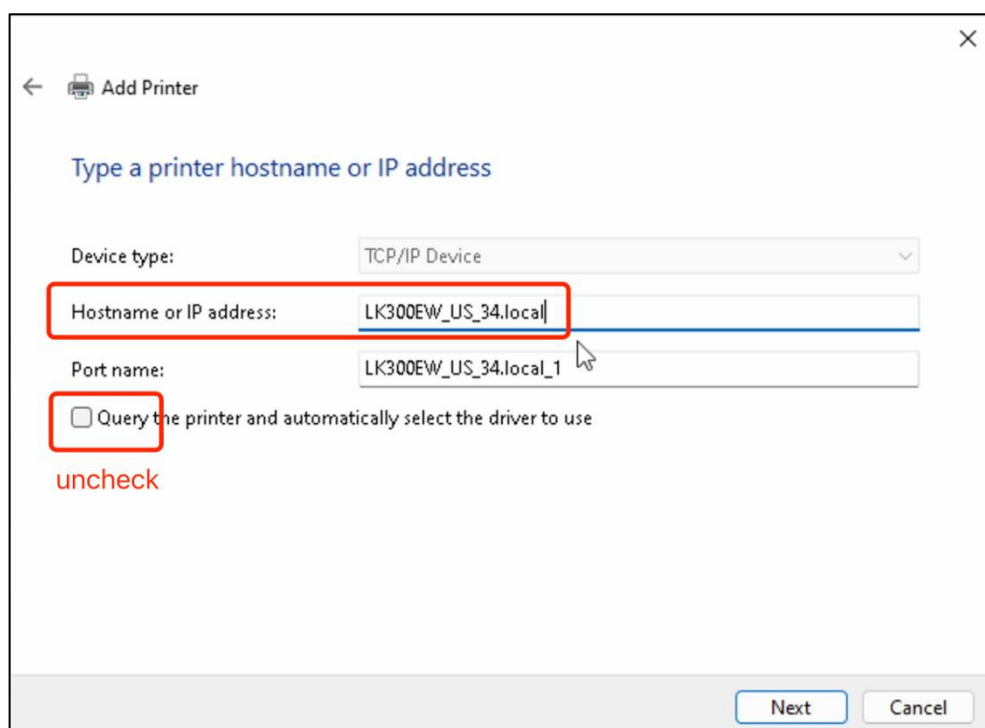


10. Select to create a new port, choose Standard TCP/IP Port, and click “Next.”

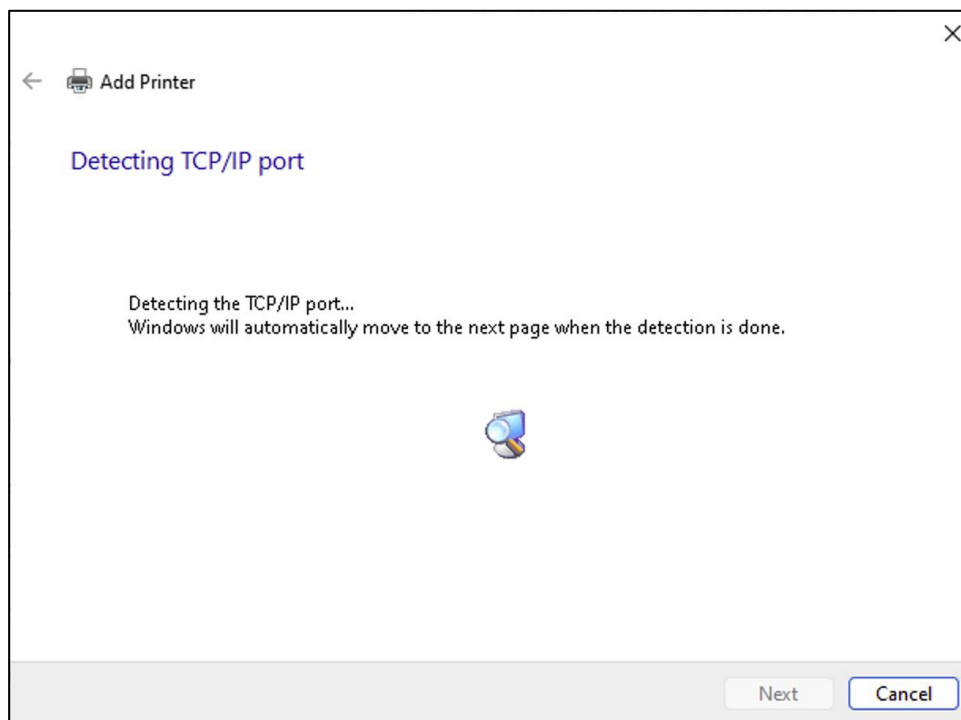


## 4. Enter the Hostname.local

11. In the “Hostname or IP address” field, enter the Hostname followed by **.local** (e.g., LK300EW\_US\_34.local )
12. Uncheck “Query the printer and automatically select the driver to use,” and then click “Next.”

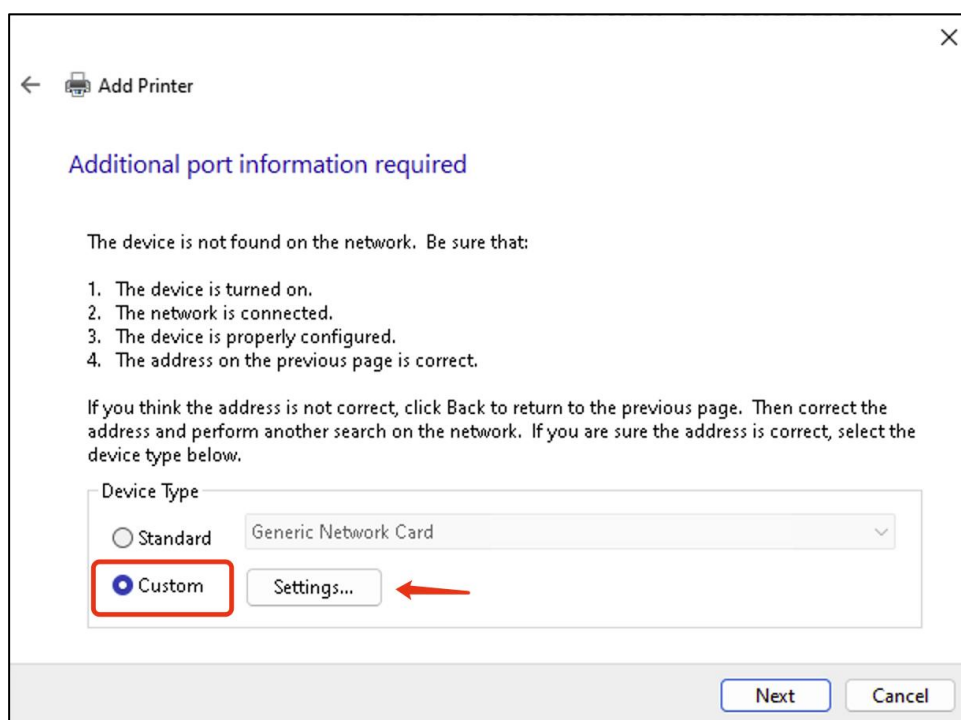


13. Wait for the detection of the TCP/IP port, approximately 1 minute.



## 5. Check the port number

1. Choose “Custom,” and click “Setting” to check the Port Number. Ensure that you select the USB port where the printer is connected as identified on the Web Management Page.



For LK100W, the default port number is 9100.

For LK300W, the port number depends on which USB port of the printer server is connected to the printer. You can see which USB port on the web management page.

- USB1: 9100
- USB2: 9101
- USB3: 9102

Configure Standard TCP/IP Port Monitor

Port Settings

Port Name: LK300EW\_US\_34.local\_1

Printer Name or IP Address: LK300EW\_US\_34.local

Protocol

☒ Raw ☐ LPR

Raw Settings

Port Number: 9100

LPR Settings

Queue Name:

☐ LPR Byte Counting Enabled

☐ SNMP Status Enabled

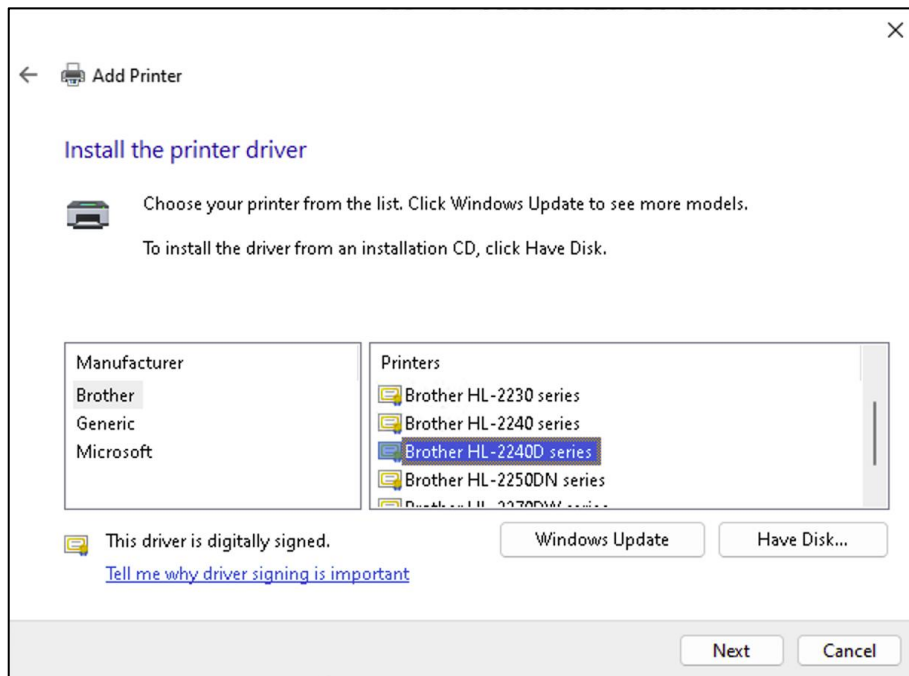
Community Name: public

SNMP Device Index: 1

OK Cancel

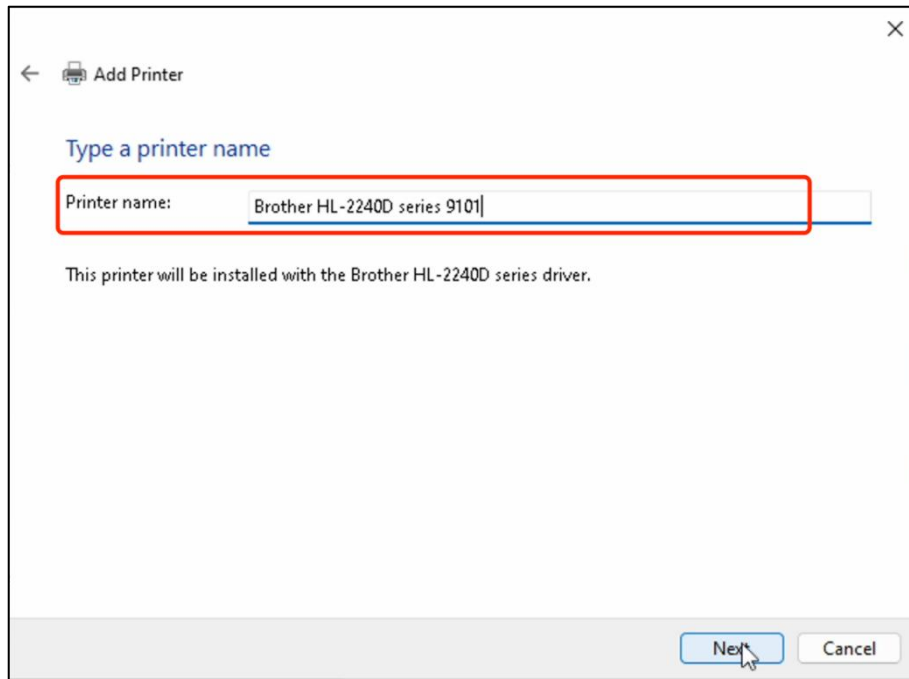
## 6. Select the printer driver

1. If the computer previously installed the printer driver, select the brand and model of the printer from the list, and click “Next.”



Note: If the printer model cannot be found, it means that the printer driver has not been installed on the computer, please download and install the printer driver on the computer before adding the printer.

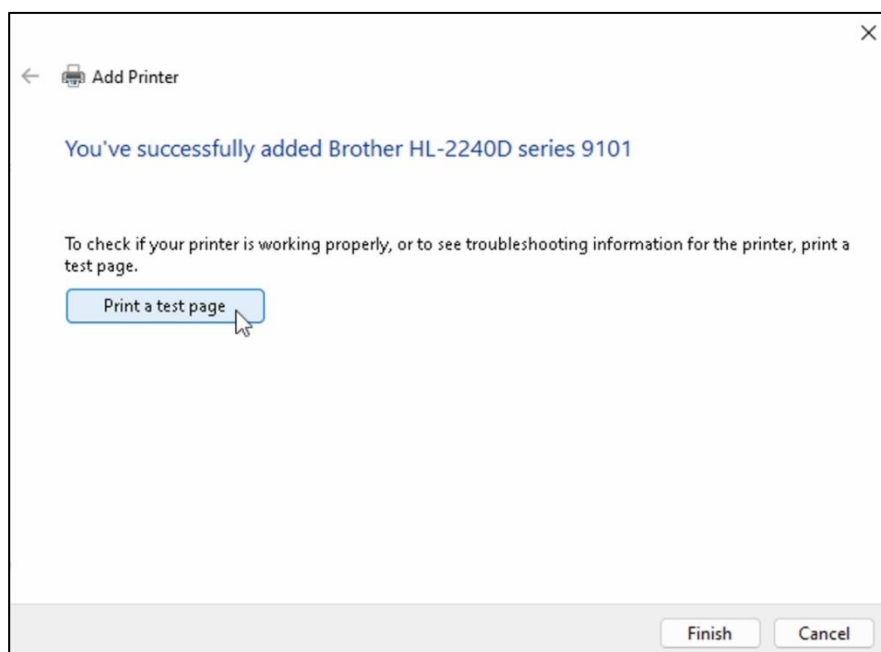
2. Optionally, customize the name of the printer, and click “Next.” It is recommended to include terms like “Print Server” in the printer name to easily identify it and avoid selecting the wrong printer when sending print jobs.



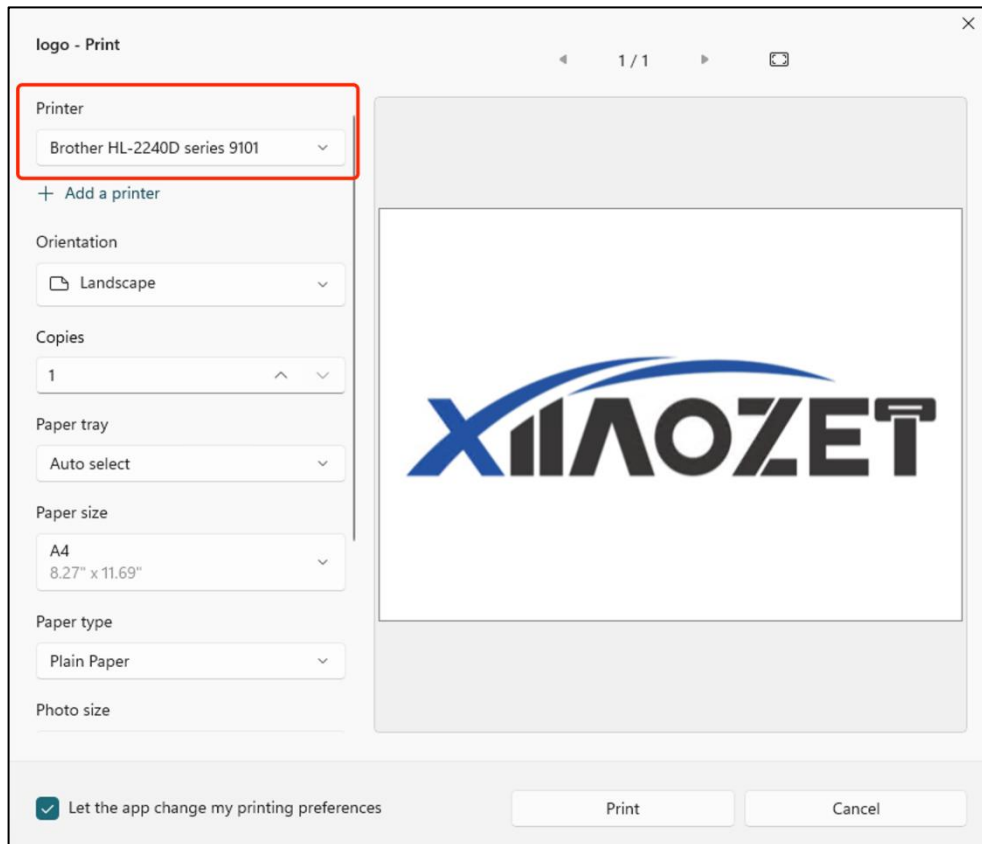
## 7. Print a test page

1. After completing the addition, print a test page to verify the settings. If the test page prints successfully, click “Finish,” indicating successful addition of the printer.

Note: If printing a test page is unsuccessful, remove the added printer from your computer. Then, re-add the printer following the steps above, ensuring each step is correctly completed.



2. Important !!! When sending a print job, make sure to select the newly added printer by its name.



[If unable to successfully add the printer, try other methods.](#) 

# Step2: How to Add Printer to Computer Manually with IP Address (Windows)

## Table of Contents

- 1. Install the Printer Driver
- 2. Open the web management page of the Print Server
- 3. Add the printer
- 4. Enter the hostname.local
- 5. Check the port number
- 6. Select the printer driver
- 7. Print a test page


## 1. Install the Printer Driver

!!! You need to download the driver corresponding to your printer model from the official website of the printer brand first.


## 2. Open the web management page of the Print Server

After configuring the network for print server, open your browser and enter the following address: `xiiaozet.local`, enter to access the print server's Web Management Page.

On the Web Management Page, you can find important details such as the Hostname, **IP Address**, and the USB Port where the printer is connected.

Network Status			When you use Wired Connection
Network Interface	Info	Status	
LAN1	Mode: DHCP IPv4: 192.168.1.100 Subnet Mask: 255.255.255.0 Gateway: 192.168.1.1 DNS: [ "192.168.1.1" ]		
WiFi	Mode: DHCP WiFi Channel: the ( 2.4 GHz , 0MHz )		

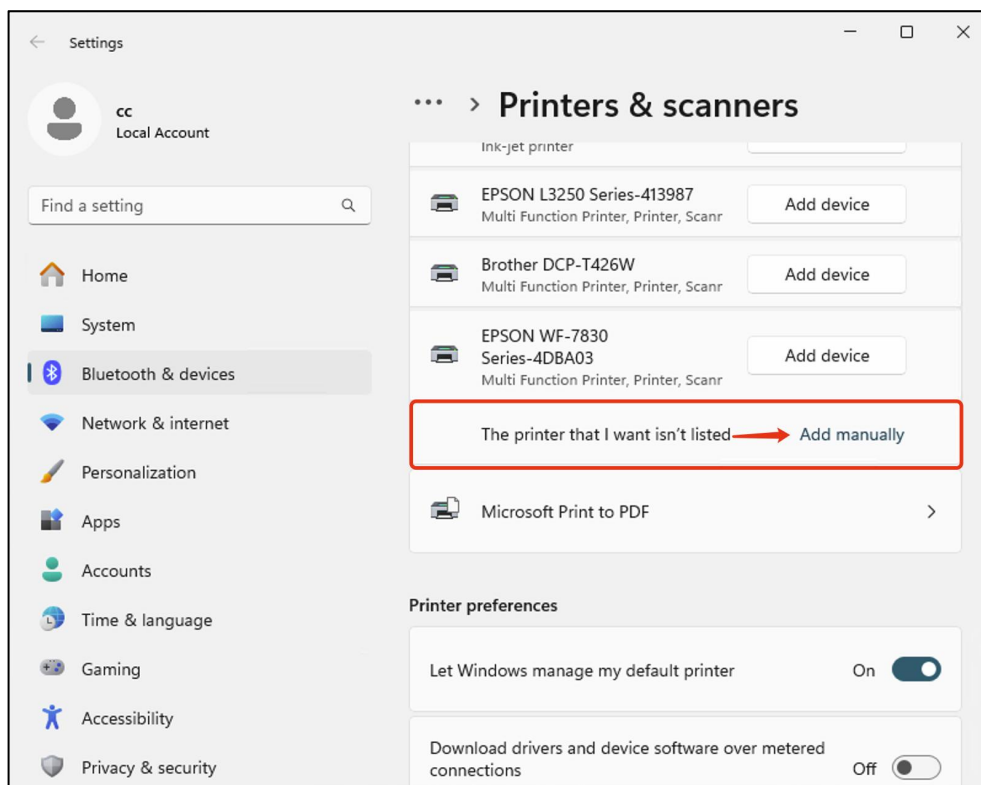
  

Network Status			When you use Wireless Connection
Network Interface	Info	Status	
LAN1	Mode: DHCP IPv4: 192.168.1.100 Subnet Mask: 255.255.255.0 Gateway: 192.168.1.1 DNS: [ "192.168.1.1" ]		
WiFi	Mode: DHCP IPv4: 192.168.1.100 Subnet Mask: 255.255.255.0 Gateway: 192.168.1.1 DNS: [ "192.168.1.1" ]		

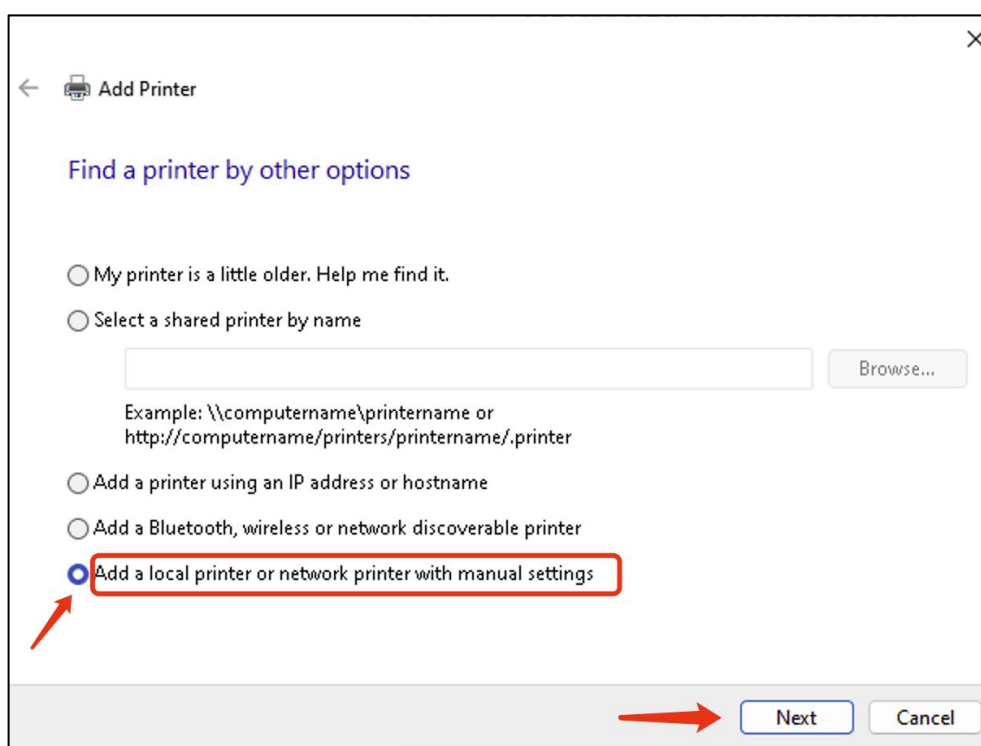
### 3. Add the printer

1. For Windows 10 and earlier systems, open the control panel, navigate to “Devices and Printers,” click “Add a printer,” and then click “The printer I want isn’t listed.”

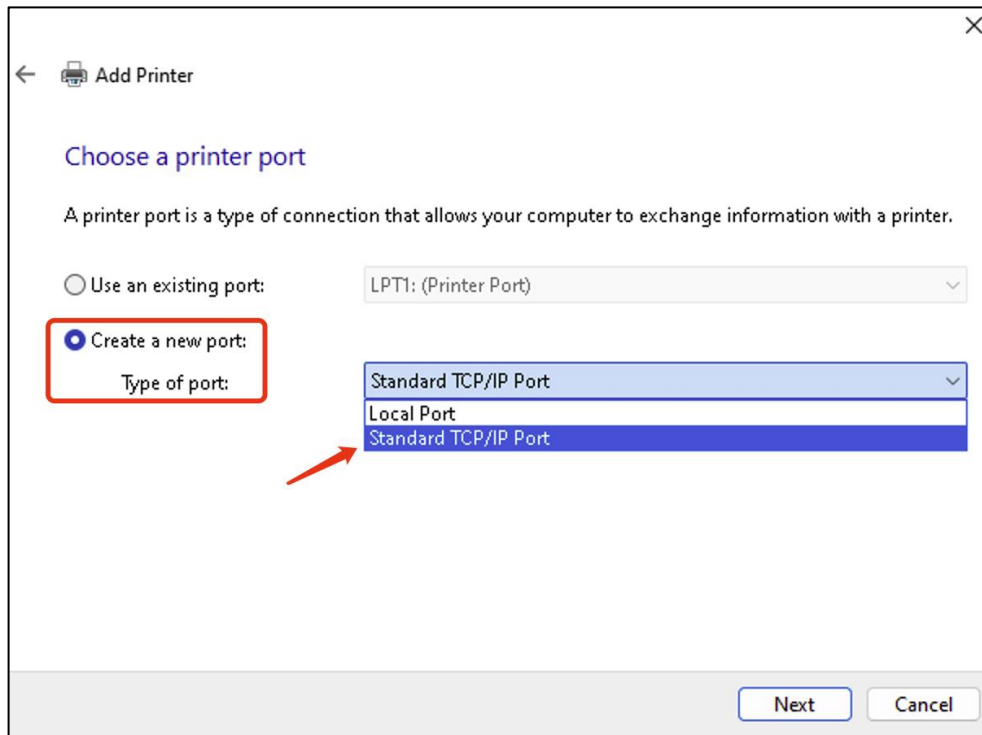
Note: For Windows 11, go to the system “Settings,” click “Bluetooth & Devices,” then select “Printers & scanners,” click “Add device,” choose “The printer I want isn’t listed,” and then click “Add a printer manually”



2. Choose to manually add a local printer or network printer, and click “Next.”

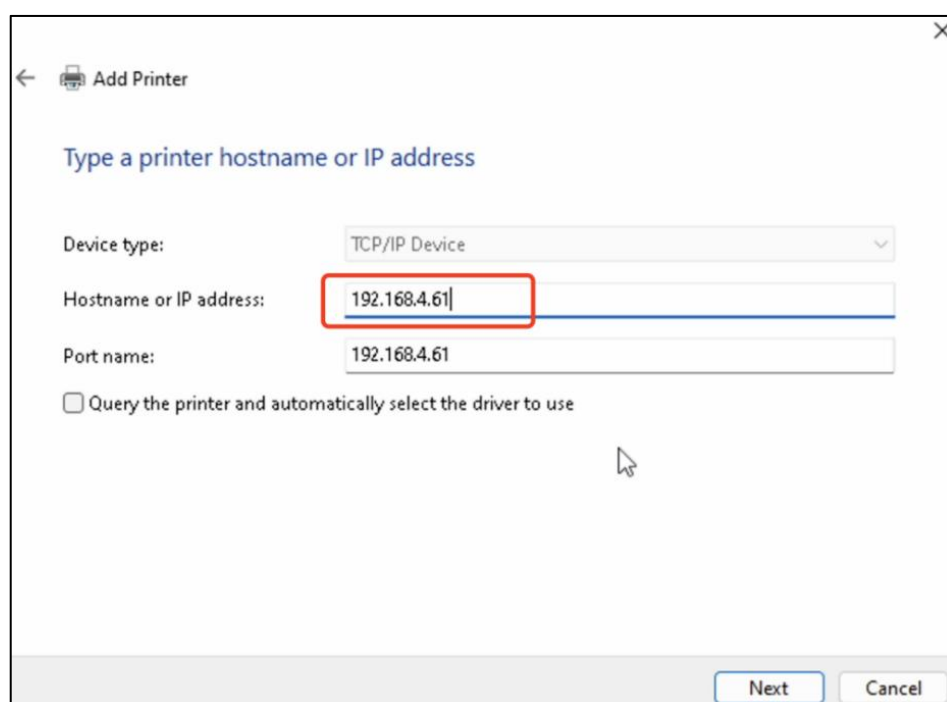


3. Select to create a new port, choose Standard TCP/IP Port, and click “Next.”

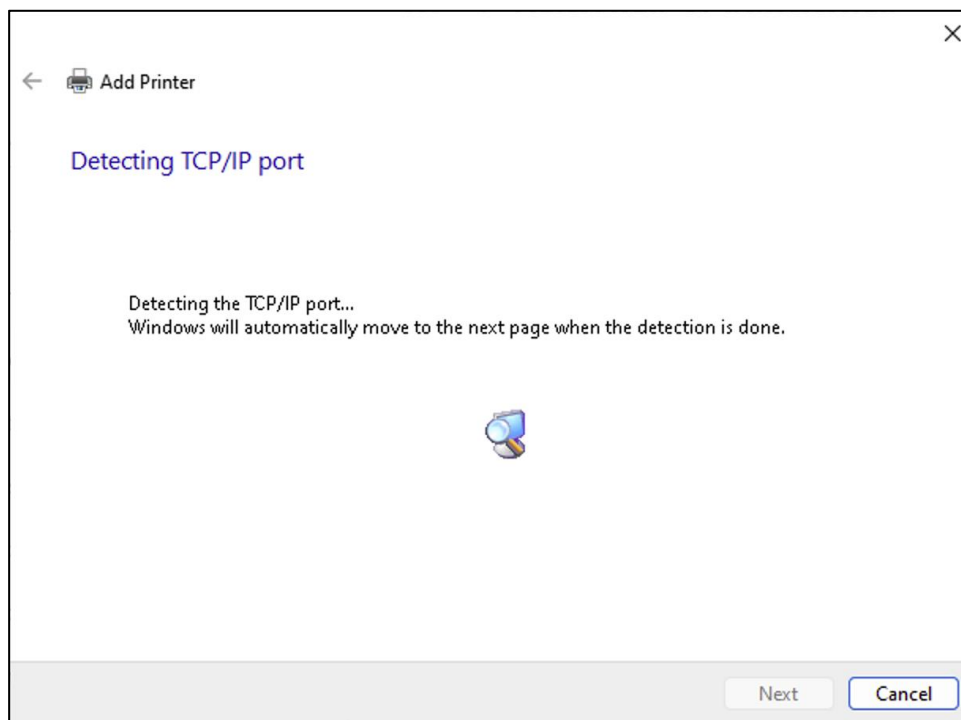


## 4. Enter the IP address

1. In the “Hostname or IP address” field, enter the IP address of print server (obtained in [Step 2](#))
2. Uncheck “Query the printer and automatically select the driver to use,” and then click “Next.”

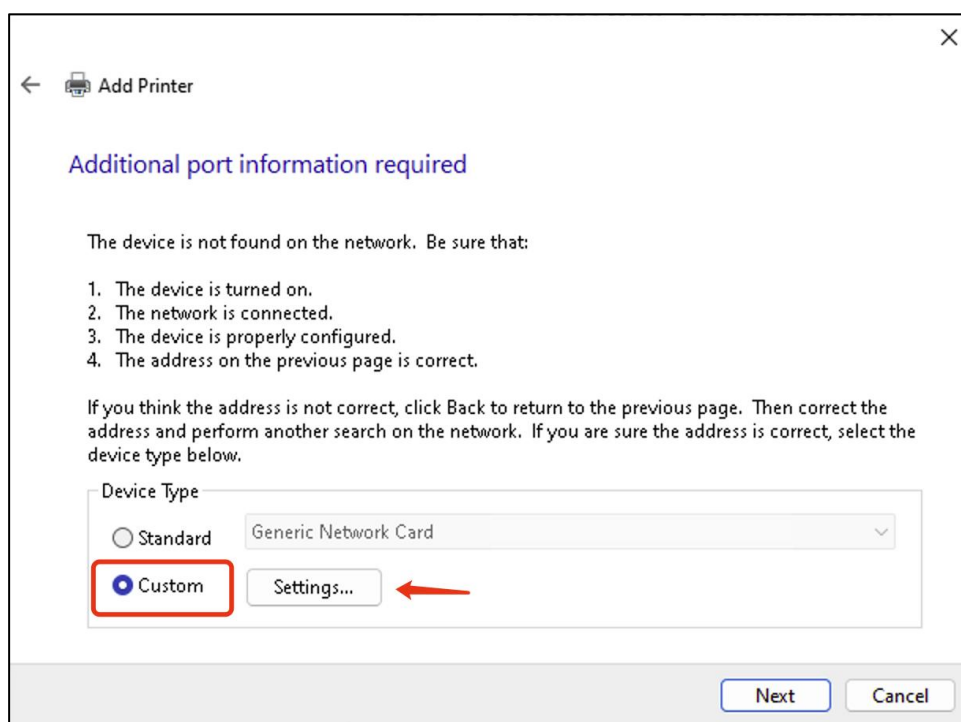


3. Wait for the detection of the TCP/IP port, approximately 1 minute.



## 5. Check the port number

1. Choose “Custom,” and click “Setting” to check the Port Number. Ensure that you select the USB port where the printer is connected as identified on the Web Management Page.



For LK100W, the default port number is 9100.

For LK300W, the port number depends on which USB port of the printer server is connected to the printer. You can see which USB port on the web management page.

- USB1: 9100
- USB2: 9101
- USB3: 9102

Configure Standard TCP/IP Port Monitor

Port Settings

Port Name: 192.168.4.61

Printer Name or IP Address: 192.168.4.61

Protocol

☒ Raw ☐ LPR

Raw Settings

Port Number: 9100

LPR Settings

Queue Name:

☐ LPR Byte Counting Enabled

☐ SNMP Status Enabled

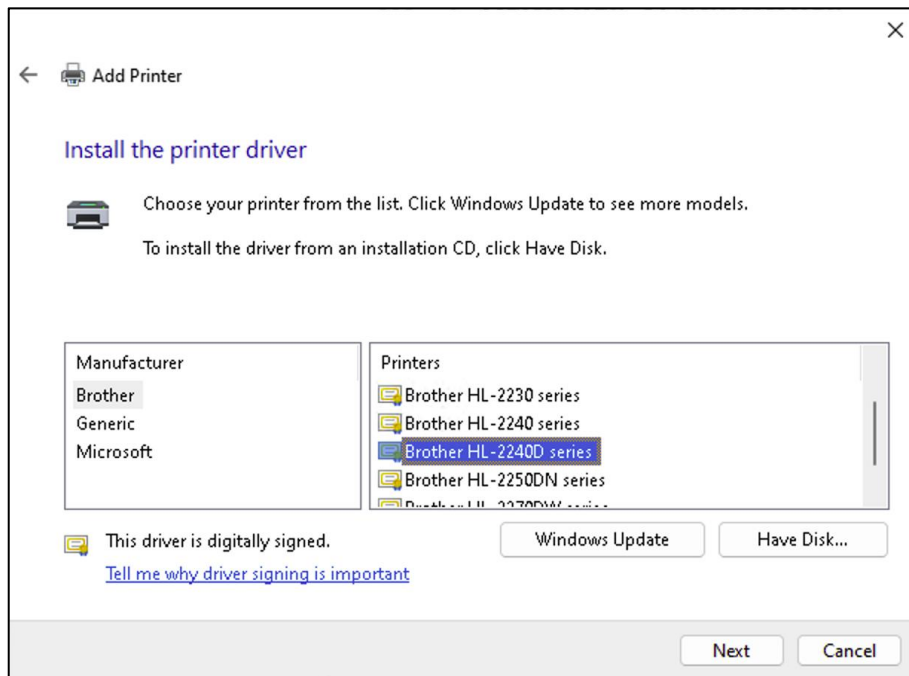
Community Name: public

SNMP Device Index: 1

OK Cancel

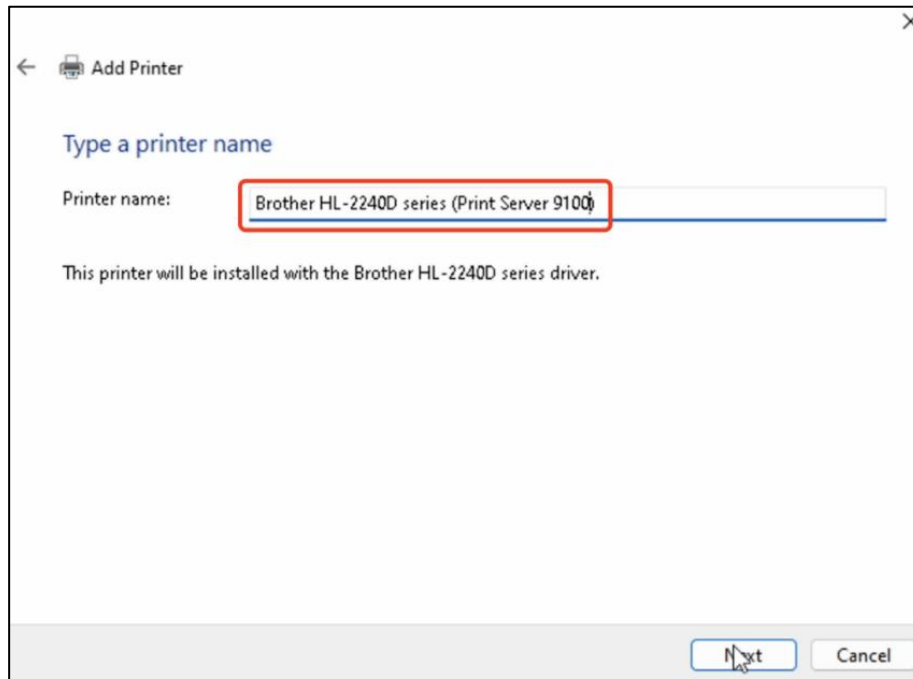
## 6. Select the printer driver

1. If the computer previously installed the printer driver, select the brand and model of the printer from the list, and click “Next.”



Note: If the printer model cannot be found, it means that the printer driver has not been installed on the computer, please download and install the printer driver on the computer before adding the printer.

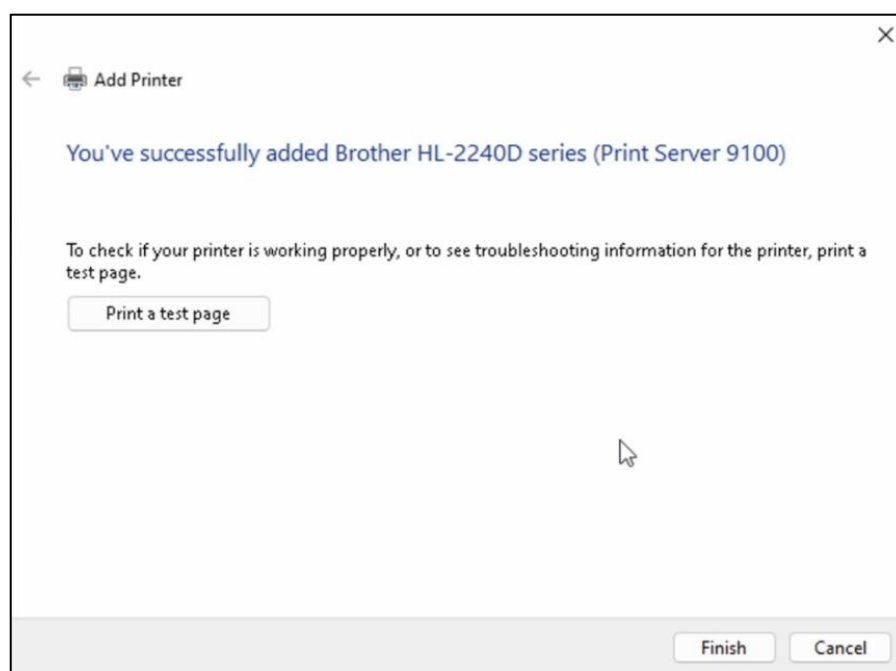
2. Optionally, customize the name of the printer, and click “Next.” It is recommended to include terms like “Print Server” in the printer name to easily identify it and avoid selecting the wrong printer when sending print jobs.



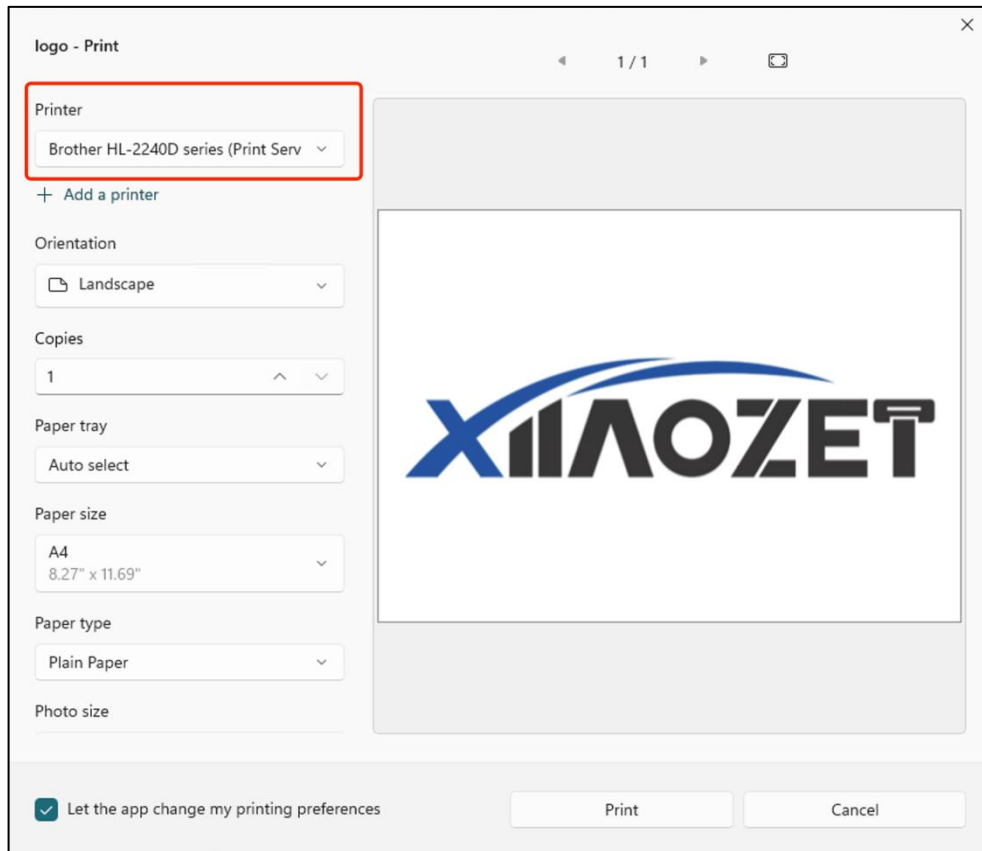
## 7. Print a test page

1. After completing the addition, print a test page to verify the settings. If the test page prints successfully, click “Finish,” indicating successful addition of the printer.

Note: If printing a test page is unsuccessful, remove the added printer from your computer. Then, re-add the printer following the steps above, ensuring each step is correctly completed.



2. Important !!! When sending a print job, make sure to select the newly added printer by its name.



[If unable to successfully add the printer, try other methods.](#) 

If the issue persists or you have any question, please contact us and describe your problem in detail to our technical support team.

# Steps to Use the Virtual USB Tool on Windows

*It simulates the plugging and unplugging of the device's USB cable through software. When connected, it works just like the device is directly connected to your computer, without the need for physical interaction.*

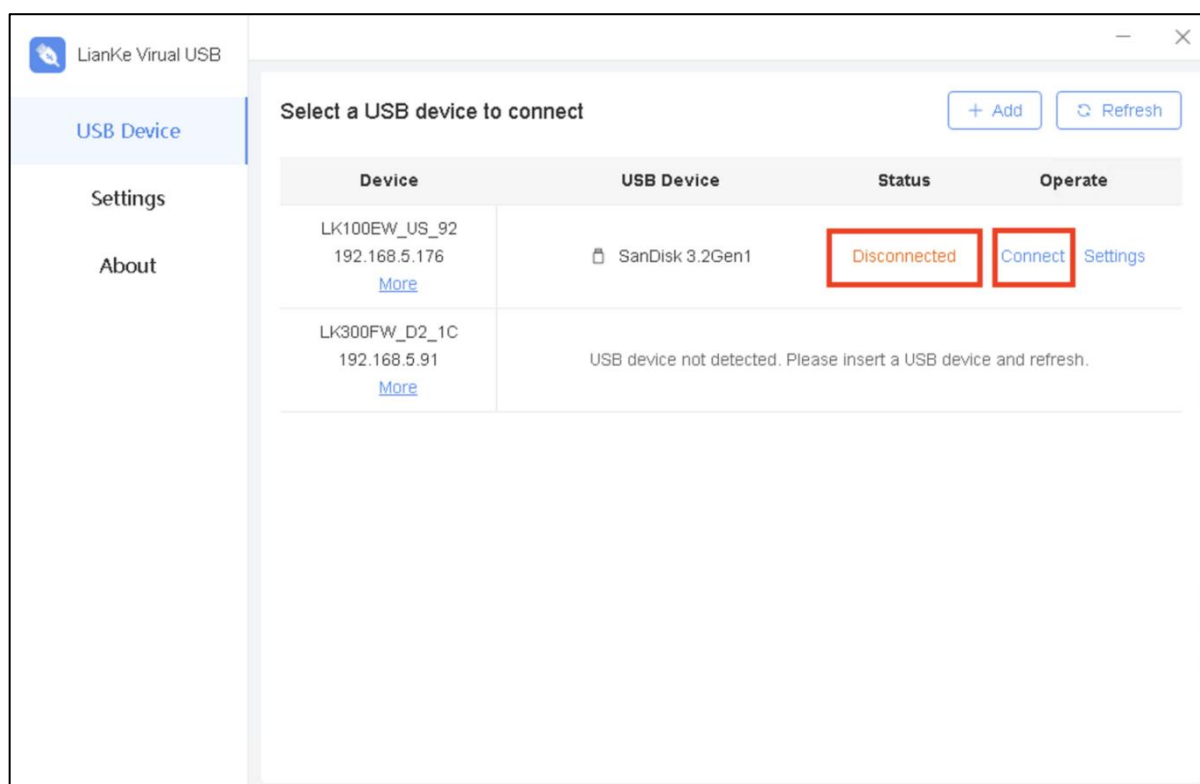
## 1. Download and Install the Virtual USB Connect Tool

Visit [www.xiaozet.net/download](http://www.xiaozet.net/download) to download the Virtual USB Connect Tool.

Install the software following the prompts

## 2. Run the Virtual USB Tool

1. Launch the “Virtual USB Client” software after installation.
2. The software will automatically detect print servers on the local network and display connected device information.



### **3. Select and Connect/Disconnect USB Devices/ Printer**

1. In the software interface, select the USB device you need to connect to.
2. Click “Connect” to establish a connection. The status will change to “Connected.”
3. To disconnect, select the device again and click “Disconnect.” The status will change to “Disconnected.”

### **4. Install USB Device Driver (If Required)**

The experience is similar to plugging a USB device directly into your computer. If your USB device, such as a printer, requires a driver to be installed before use, ensure the driver is installed on the computer before proceeding.

## **Common Issues and Solutions**

Q: Software not detecting print server

A:

- Make sure your computer is connected to the same network as the print server.
- Restart the virtual USB software to refresh the connection.
- Contact technical support for further assistance.

Q: When connecting other USB devices, it prompts that authorization is required:

A:

- Restart the virtual USB software to refresh the connection.
- Click more, and click the network authorization.
- Contact technical support for further assistance.

Q: Cannot connect to printer?

A:

- Ensure the printer and print server are physically connected properly.
- Verify the correct USB device is selected in the software.
- Restart the printer.
- Check the USB cable for any damage or loose connections.
- Ensure that the printer is turned on and in a ready state.